



GTe4XXe

Engineered to Redefine High-performance Industrial Printing



FASTEST IN THE MARKET

High print speed of 300 mm (12ips) @ 203/305 dpi. It is the FASTEST thermal barcode printer in its class.



NO PC REQUIRED

Pre-loaded application in the system and easy-to-navigate menu provide a simple solution to customize printed labels, thus no PC connection required.



BUILT TO LAST

Durable design and aluminium die cast construction at print head and base provide reliable printing and higher success rate of readable barcodes, even in harsh industrial environments.



Large LCD display with graphical icons for user-friendly operation



Multifunction buttons providing easy-to-navigate menu options



Coreless ribbon simplifying the ribbon setting operations (option)



User configurable print head 203/305/609 dpi



Tri-interface port for various connectivity

GTe408e / GTe412e / GTe424e

General Specifications

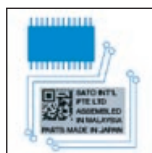


| PRINTING SPECIFICATION | | GTe408e | GTe412e | GTe424e |
|---|-------------------------|---|---------------------------|--------------------------|
| Printing Method | | Direct Thermal or Thermal Transfer | | |
| Print Resolution, dots/mm (dpi) | | 8 dots/mm (203dpi) | 12 dots/mm (305dpi) | 24 dots/mm (609dpi) |
| Max. Print Area | Width, mm (inch) | 104 mm (4.1") | | |
| | Length, mm (inch) | 2500 mm (98.43") | 1500 mm (59.10") | 400 mm (15.7") |
| Print Speed, mm/sec | | Up to 300 mm/sec (12 ips) | Up to 300 mm/sec (12 ips) | Up to 150 mm/sec (6 ips) |
| CONSUMABLES SPECIFICATION (Recommended to use printer supplies manufactured or certified by SATO) | | | | |
| Sensor Type | | Paper sensor: reflection type, penetration type | | |
| Media Type | | SATO recommended roll paper and fanfold | | |
| Media Size | Width, mm | 22 ~ 128 mm | | |
| | Length, mm | 5 ~ 397 mm | | |
| | Thickness, mm | 0.06 ~ 0.268 mm | | |
| | Outer Diameter, mm | 265 mm (10.43") | | |
| Ribbon | Inner Diameter, mm | 25.5 mm | | |
| | Width, mm | 39.5 ~ 128 mm | | |
| | Length, m | Max up to 450 m | | |
| FONT / SYMBOLOGIES | | | | |
| Font | Internal | U, S, M, WB, XU, XM, XB, XL, OUTLINE, OCR-A, OCR-B | | |
| | TrueType Font | CG Times, CGTriumvirate (Featuring AGFA UFST) | | |
| Barcode symbologies | 1-Dimension | UPC-A/E, JAN/EAN, CODE39, CODE93, CODE128, UCC/EAN128, NW-7, Customer Barcode, MSI, Interleaved 2 of 5, Industrial 2 of 5, Matrix 2 of 5, BookLand, POSTNET, RSS-14 | | |
| | 2-Dimension | QR Code (Ver. 8.1: Chinese QR and Korean QR are individually operated) PDF417 (Ver. 2.4: Including Micro PDF417); Veri Code (Ver. 1.0); MAXI Code (Ver. 3.0); Data Matrix (Ver. 2.0); Composite Symbology (Compatible with CC-A/B/C by UPC-A/E, JAN/EAN, CODE39, CODE128, RSS-14) | | |
| INTERFACE CHARACTERISTICS | | | | |
| Processor | | 32-bit RISC | | |
| Interface | | 1) Interface board slot (2 slots, one of them is used only for mini LAN I/F slot) 2) EXT board slot | | |
| Optional interfaces | | Parallel IEEE1284, Serial RS-232C, USB (Ver. 1.1), LAN (10BASE-T/100BASE-TX), Wireless LAN (IEEE802.11b), Mini LAN (10BASE-T/100BASE-TX), EXT connector (external signal) | | |
| OPERATING CHARACTERISTICS | | | | |
| Power Requirements | | AC100 / 240V [Maximum:200VA / 200W (Standby: 62VA / 89W)] | | |
| Environment | Operating | 0 ~ 40°C / 30 ~ 80% RH (w/out condensation) | | |
| | Storage | -5 ~ 60°C / 30 ~ 90% RH (w/out condensation) | | |
| Dimension (W x D x H), weight | | W271 x D455 x H305mm / Approx. 15kg | | |
| ACCESSORIES | | | | |
| RFID Unit (HF) , Cutter Unit (Guillotine Cutter), Dispenser Unit (with Backing Paper Rewinder), Simplified Dispense Unit, Internal Rewinding Unit, Linerless Unit, Scanner Unit for Verification | | | | |
| OTHERS | | | | |
| Function | Useful Features | Status Return Function, Graphic Function, Sequential Number Function, Form Overlay Function, External Character Registration Function, Character Correction Function, Black/White, Inversion Function, Ruled Line Function, Dump List Function, Format Registration Function, Outline Variable Function, Label Skip Function, Zero Slash Switching Function, JIS/Shift JIS Switching Function | | |
| | Self Diagnosis Checking | Head Check, Paper End Detection, Ribbon End Detection, Head Open Detection, Test Print. | | |

Recommended applications



Construction / Industrial
The 203 dpi solution is suitable for printing simple labels with human-readable characters, without the need to print either 2D-code or graphics.



Semiconductor / Electronics
This high resolution 609 dpi solution is ideal for printing tiny label stickers for electronic peripherals such as PCBs, hard disk drives, and other small electronic components in both linear and 2D-code.



Dual LAN System

- MiniLAN allows printing and receiving error status through SMTP / POP3 / HTTP
- Option of using two ports. Checking printer status while sending data such as e-mail (SMTP) can be done simultaneously
- Capable of forwarding printer status to mobile phones (via SMTP)
- Staff can work from anywhere.



Warehousing / Logistics
305 dpi is the standard resolution used for logistics (such as printing shipping labels) Capable of supporting small barcodes, 2D-code, as well as simple graphics



The "Standalone" Warehousing solution
SEMBL (SATO EMBEDDED BASIC LANGUAGE) enables developed software applications to reside within the GT printer.

- Plug-and-Play feature for connectivity of peripheral devices (i.e., scanners, scales, keyboards)
- Easy to operate configuration for quick installation